



ActiveModeler Avantage



Process Model Web Publishing Users Guide



© 2008 KAISHA-Tec Co. Ltd. Japan
5-17-8 Inokashira,
Mitaka-shi, Tokyo, 181-0001 JAPAN

Document Revision:	1.109
Date:	05/26/2008
Printed	10:45:02 AM

ActiveModeler™ and ActiveFlow™ and ActiveModeler Avantage™ are registered trade marks of KAISHA-Tec Co. Japan

Web Publisher plugin

The Web Publisher plugin publishes a BPMN process model as an HTML web. The exported webs are clickable to allow drill down into sub processes.

About the Web Publisher plugin

The Web Publisher plugin exports a BPMN diagram or collection of diagrams to a collection of web pages in an output directory. These files can then be uploaded and deployed on any webserver. An HTML template can be used in order to standardize the look of the output, e.g. to a corporate standard with corporate logo, privacy information etc.

To publish a process diagram(s)

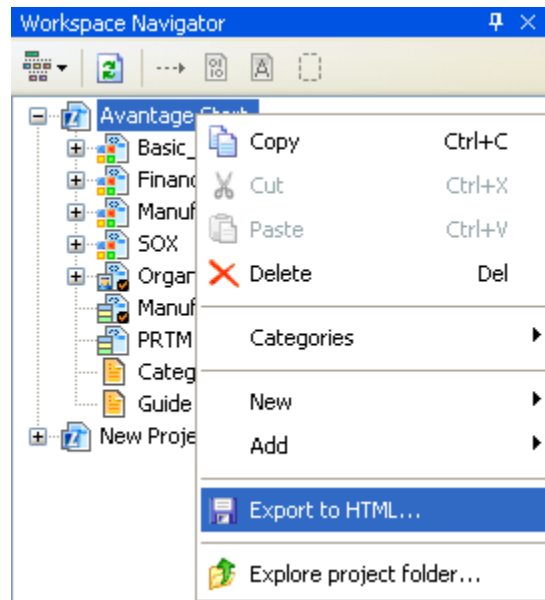
The publish command is available from any of the the following Workspace Navigator tree entries: a Project, a Folder, a Model File, a MeasurePoint or a specific Diagram.

If you publish from a tree entry other than a Diagram, then all of the Diagrams within the scope of that entry are included in the published HTML. Independent SubProcess linkages are included in the published HTML.

If you choose the publish command at the Diagram level then that Diagram is deemed to be the top level page for the Diagram. Independent SubProcess linkages are included in the published HTML as well.

To initiate the Web Publisher, make a selection and choose **Export to HTML**.

Figure 1. The Export to HTML... menu
Publishing Options



The Publishing Options wizard lets you customize the content and presentation of the exported web pages. It also lets you specify a template for the exported pages. If no template is defined a default template will be used.

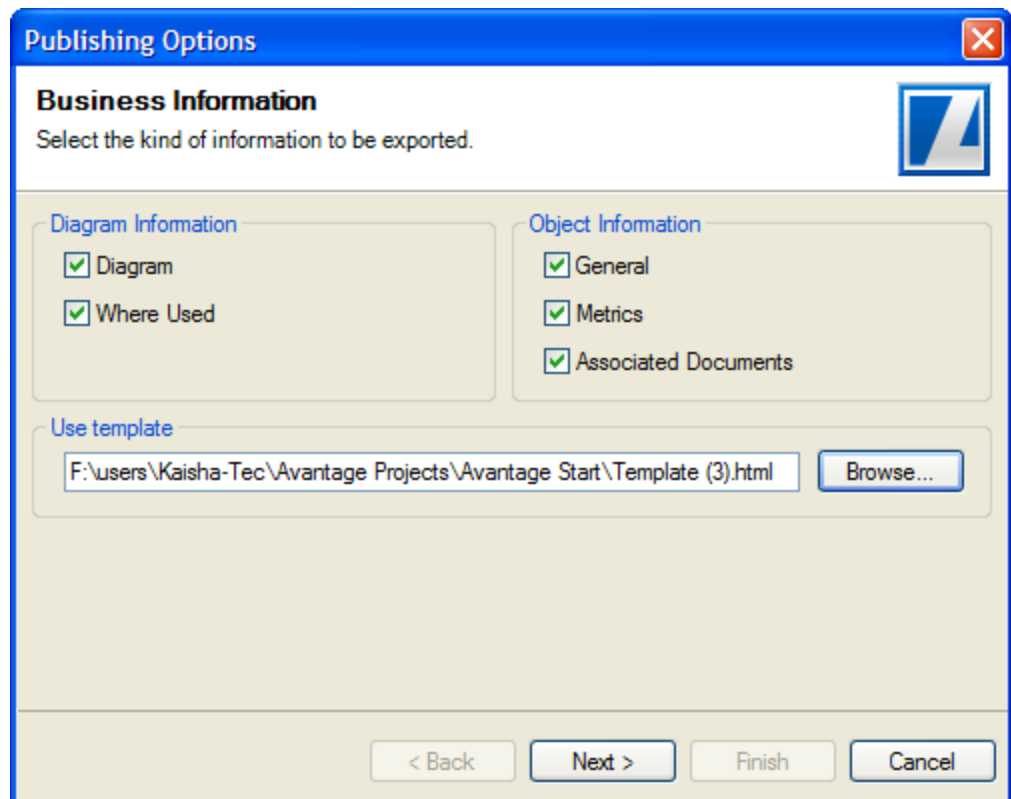
The Business Information page

This page allows you to define the kind of information you want to see in the web pages.

The Business Information selections work as follows:

- The **Diagram** selection will allow per shape information to be displayed in a tool tip. The selections of the tool tip are organized in tabs and the content of these tabs is defined further by the Object Information selection. The General Tab allows you to see general information related to the shape, i.e. name and description. Select the Object Information's **General** checkbox to see this.
To see the Metrics, check the **Metrics** check box.
To see the shape's Associated Documents, check the **Associated Documents** check box.
- The **Where Used** selection will populate the Where Used tab with the same content as the ActiveModeler Advantage report “Analysis->Where used...”.

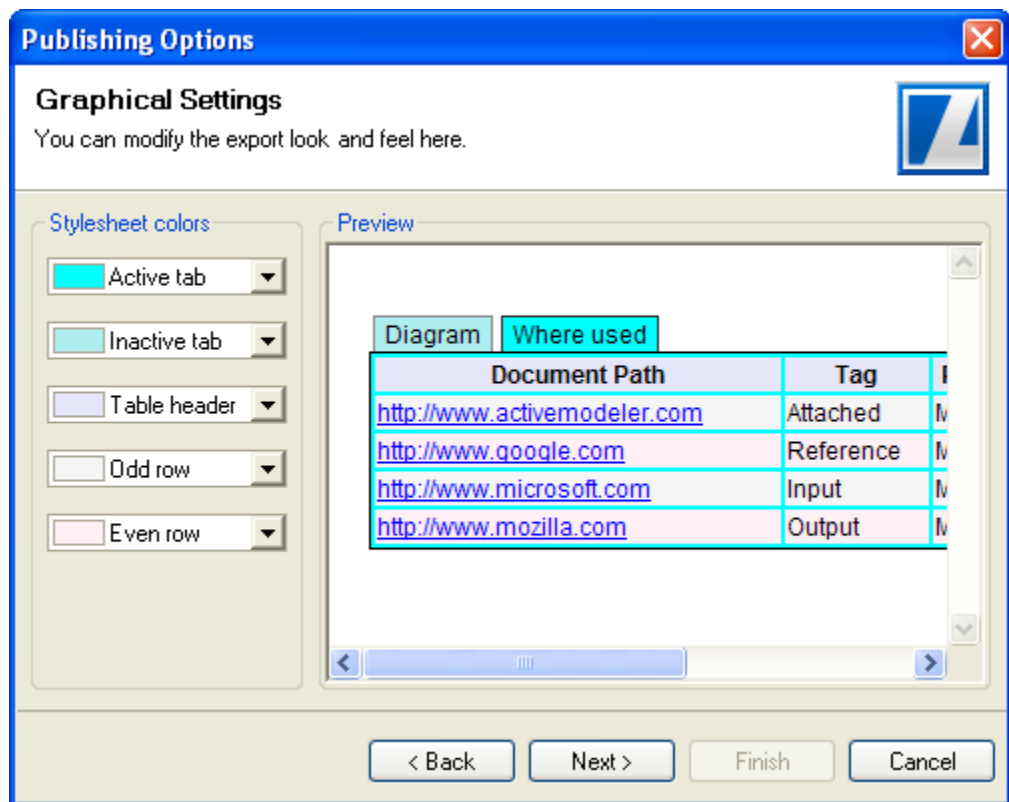
Figure 2. The Business Information page



The Graphical Settings page

The output HTML file supports CSS customization using various color picker controls hosted in this page. For ease of use, they describe themselves with their functionality.

Figure 3. The Graphical Settings page



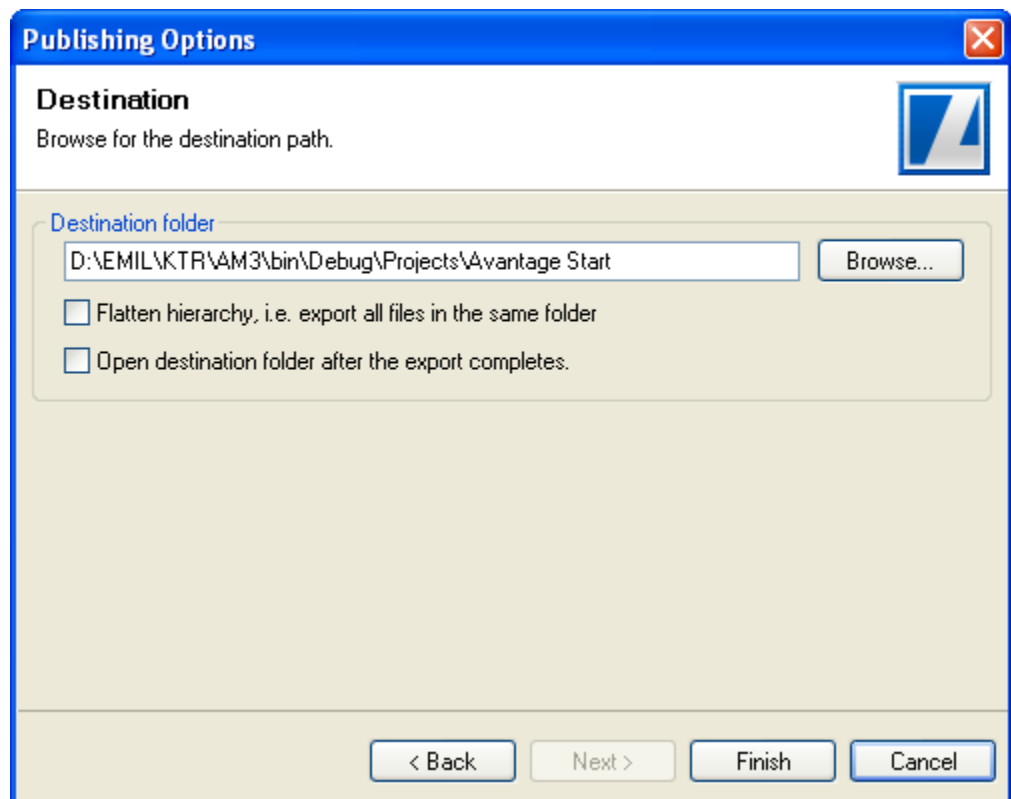
The Destination page

Here, the destination folder for the web pages can be specified.

The **Flatten hierarchy** option will save all the resulting HTML files in the same folder ignoring the Workspace Navigator tree hierarchy. Leaving it unchecked will allocate diagrams to different folders as per the tree hierarchy.

The results of the completed export can be quickly viewed if the “**Open destination folder after the export completes**” option is selected.

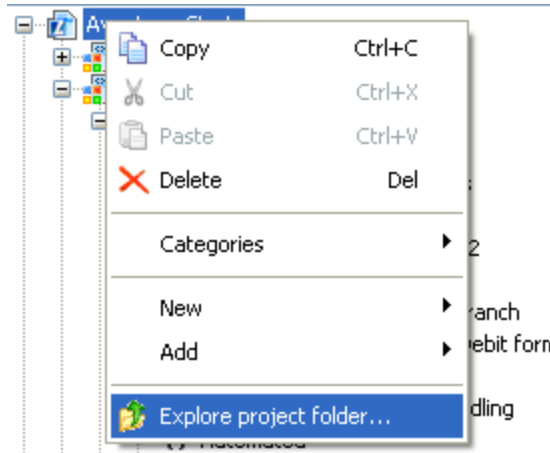
Figure 4. The Destination page



To view the files

If you did not selected the automated folder opening you may right click on the project entry in the Navigator and choose the “**Explore project folder**” menu action. This will open an Explorer Window displaying the contents of your project folder.

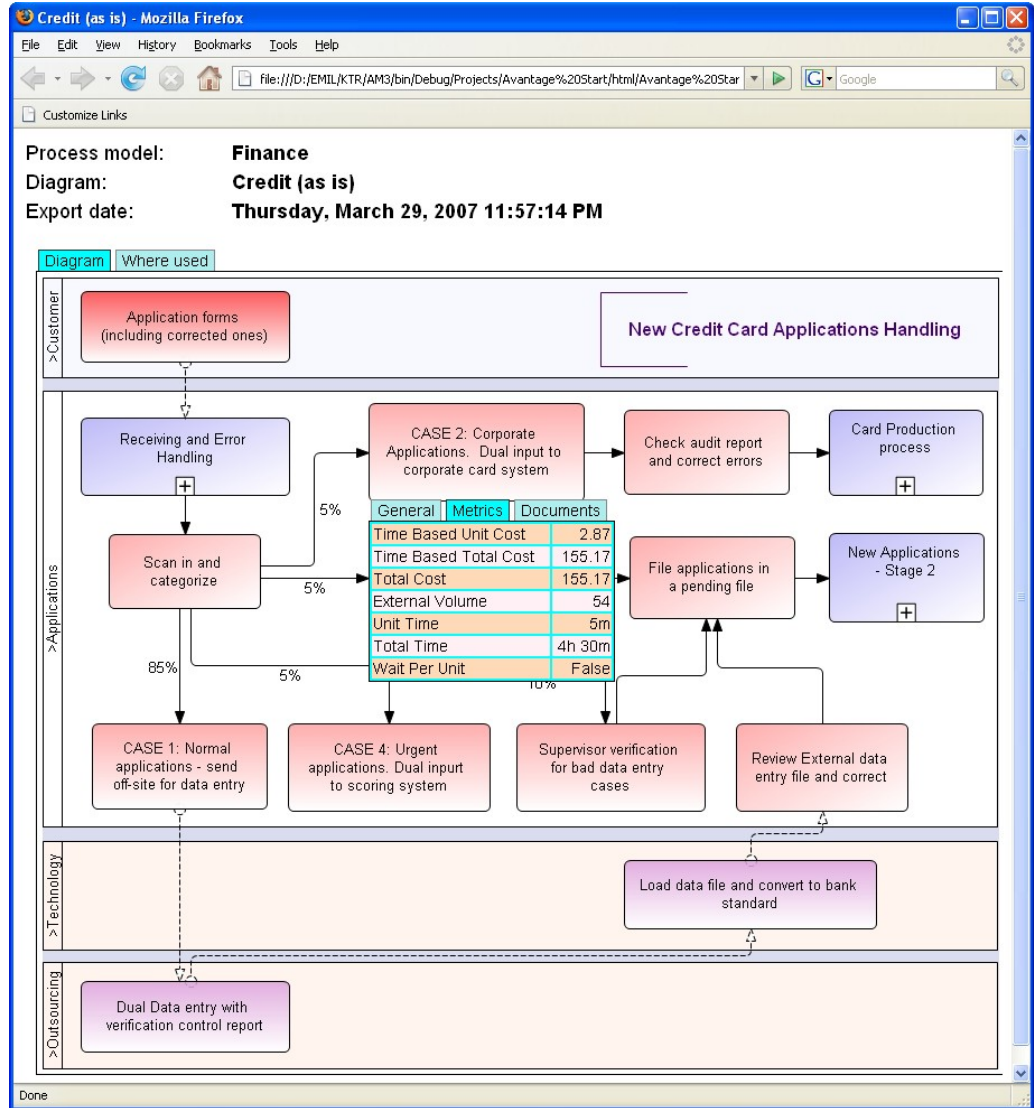
Figure 5. Exploring the project folder



Viewing the files your web browser

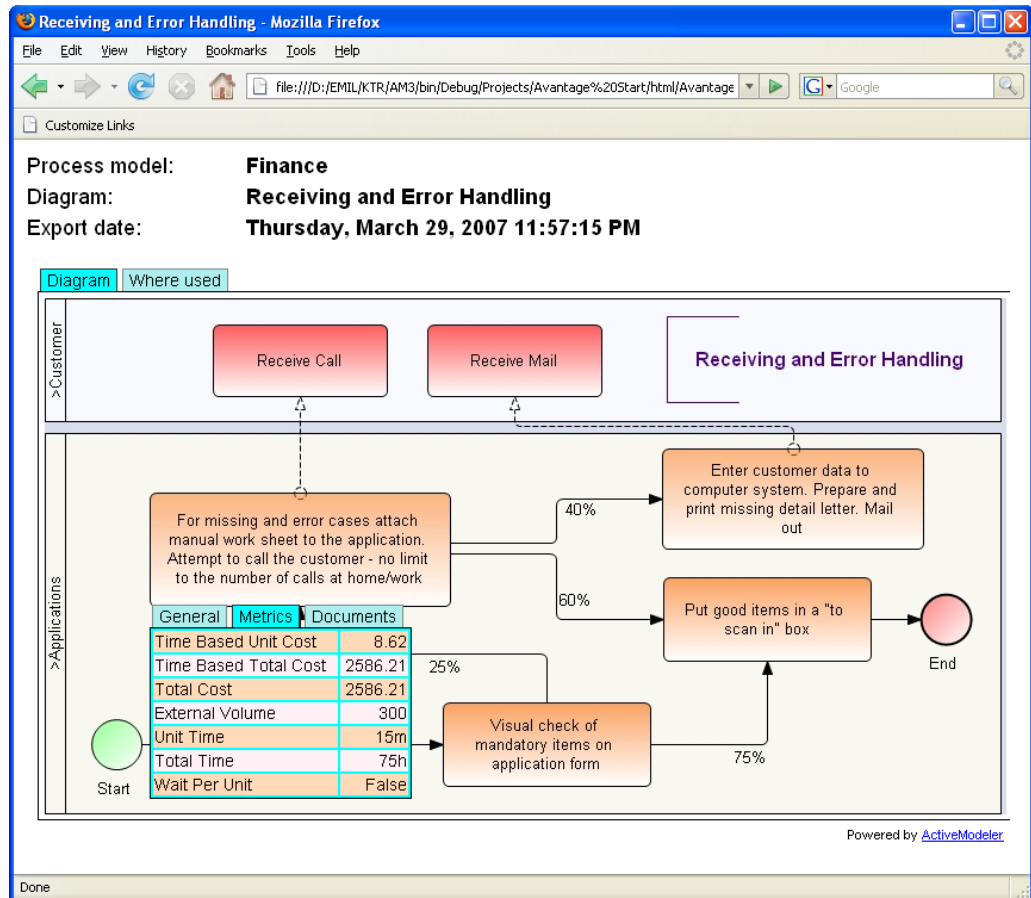
The name of each HTML file is derived from the diagram it was created from. For example if the name of the top level diagram in your selection was Credit (as is) then the name of the corresponding .HTML file is Credit (as is).HTML

Figure 6. A top level Diagram displayed in a Web browser.



You can drill down just like can inside of Avantage. When you click the mouse cursor on the [+] (plus) symbol of a SubProcess you can drill down and display that diagram. Use the backspace key or the Back button to go back to the previous diagram.

A sub diagram



➔ **Note:** For embedded SubProcess (expando type subprocess shapes), if the embedded subprocess is empty then no HTML page is created and so clicking on its [+] symbol will do nothing.


Templates

What they are used for

A template is an HTML page which contains standard HTML objects and special keywords that will be replaced during the export process.

Keywords are strings enclosed by the '{' and '}' characters. Examples of keywords are {DiagramName}, {DiagramAuthor}, {ModelName} and so on.

Figure 7. Example.

	Model: {ModelName}	Diagram: {DiagramName}
{DiagramScreenshot}		
Author: {DiagramAuthor}	Version: {DiagramVersion}	Date: {ExportDate}
Security: {propSecurity}	Other information of interest can go here: {DiagramModificationDate}	

Template Editor

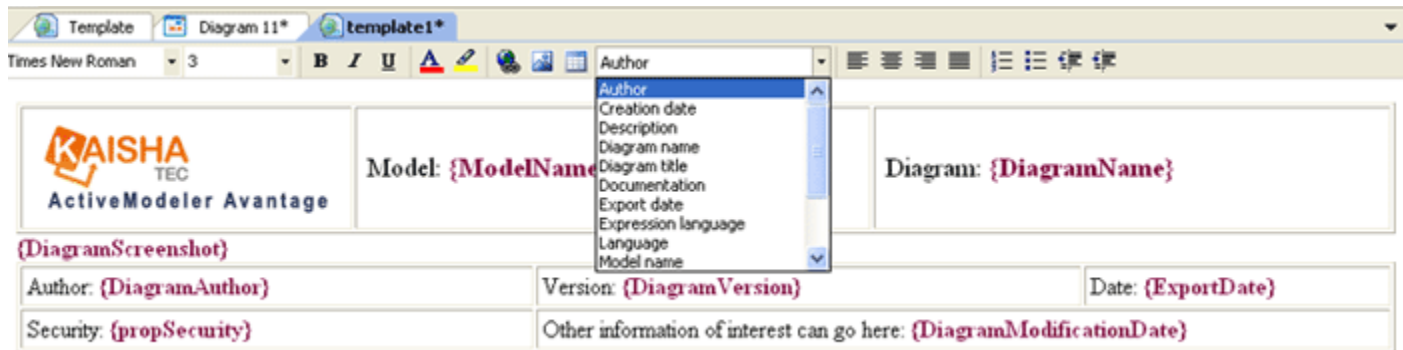
The Web Publisher plugin comes with its own HTML template editor.

To create a template, first select a project. Then right click and choose “**New->HTML file...**”.

An existing HTML file may also be added to the project. Just select in the same manner “**Add->Existing text file...**”. Make sure to use the *.* file selector.

To open a template right click on the selected file in the Workspace Navigator and select the “**Edit**” menu item. A standard HTML editor will open up.

Figure 8. Let's have a look at its features.



It has standard controls for text formatting, indentation and list grouping. Link creation, table and image insertion are also available.

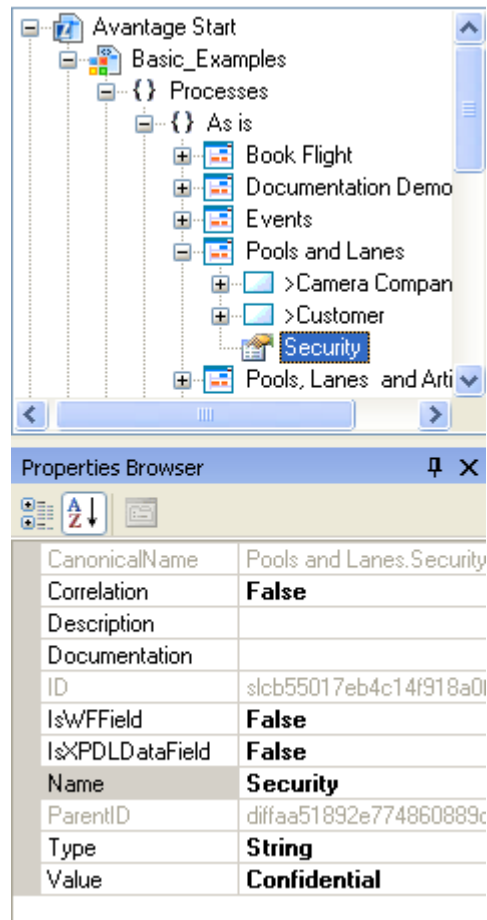
The **Properties drop-down** box allows you to insert **Native** and **Custom** properties.

Native properties are the properties seen in the Avantage Properties Browser. For a diagram we can use properties such as Name, Version, Author and so on. These corresponding items (keys) are all included in the **Properties drop-down** box. For example, choosing the **Author** item will insert the “*{Diagram.Author}*” key into the template. Of course, this string can be inserted manually but using the selector will ensure a safe and easy editing process.

Custom properties are the properties described in the Avantage documentation in the **Properties** chapter.

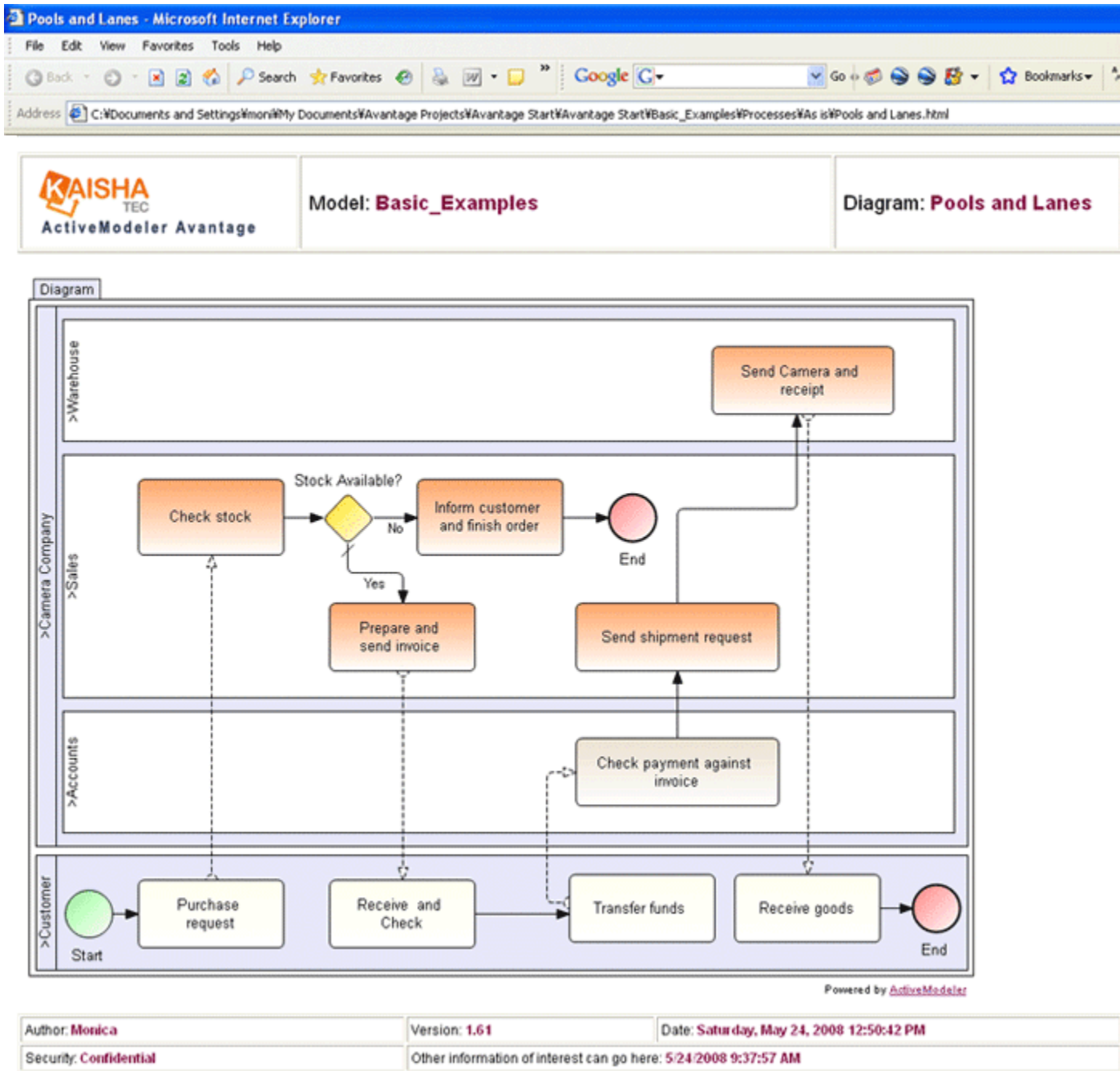
You can add a property to a diagram, giving that property a name and assigning it a value. The key generated for that property is of the form: *{propPropertyName}*. For example, we could define a diagram property called **Security**. The HTML editor is aware of all the properties defined in project's diagram and it also lists them in the **Properties drop-down** box. As you see above, we inserted the *{propSecurity}* key which instructs the plugin to replace it with the actual value of the **Security** property for the given diagram.

Figure 9. Security property.



Note. In order to fully exploit the Avantage Web Export functionality we suggest to use the included tool rather than HTML pages made with other tools which insert style tags. The final output may be degraded in this case.

Fig.10 We show you here the presentation of a diagram exported using the template presented above:



Notes

The plugin copies all the attached documents found in any project's subdirectory. These documents are considered local therefore a copy of the subdirectory is created in the target folder and the files are copied there.

If a diagram object doesn't have documents attached then the 'Documents' tooltip section is not created for that object. If a diagram doesn't have any documents attached, the 'Where used' tab is not created.

Limitations

The plugin does not have FTP capability. We recommend that you download FileZilla from http://sourceforge.net/project/showfiles.php?group_id=21558 and use FileZilla to move the files to your web server.